

# **CCMS**

## **ComsignTrust Card Management System**

**Issuance and management of digital certificates and smart cards used for digital identification and signature**

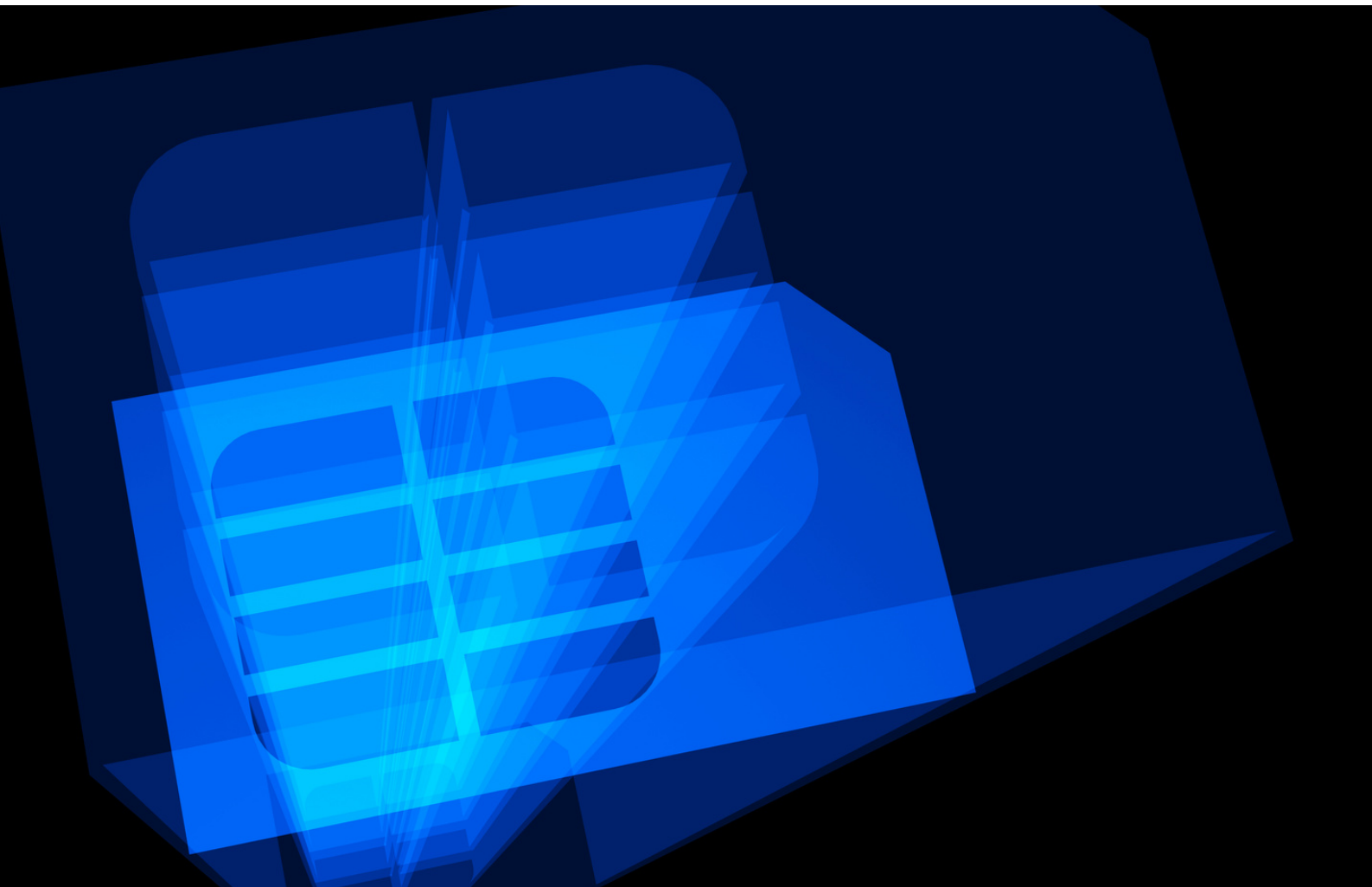


**Comda – Leading in strong authentication solutions and digital signing**



# System capabilities

- Management of smart cards for their various types and organizational affiliation
- RA system for issuing digital certificates for identification and digital signature
- Issuance of certificates from the corporate CA and their implementation on a smart card
- Interface to AD for issuing certificates to existing users
- DESFIRE component encoding, PROX ID reading and magnetic stripe encoding
- Interface to enterprise systems for issuing certificates to system users
- Unlock a blocked card
- Revocation of a certificate by the system's Admin
- Scanning and updating the status of digital certificates that have been operated directly in AD (external to the system)
- Combining multiple fields (including AD fields) into a single field for the creation of a required value
- Log management and ability to retrieve reports and statistics



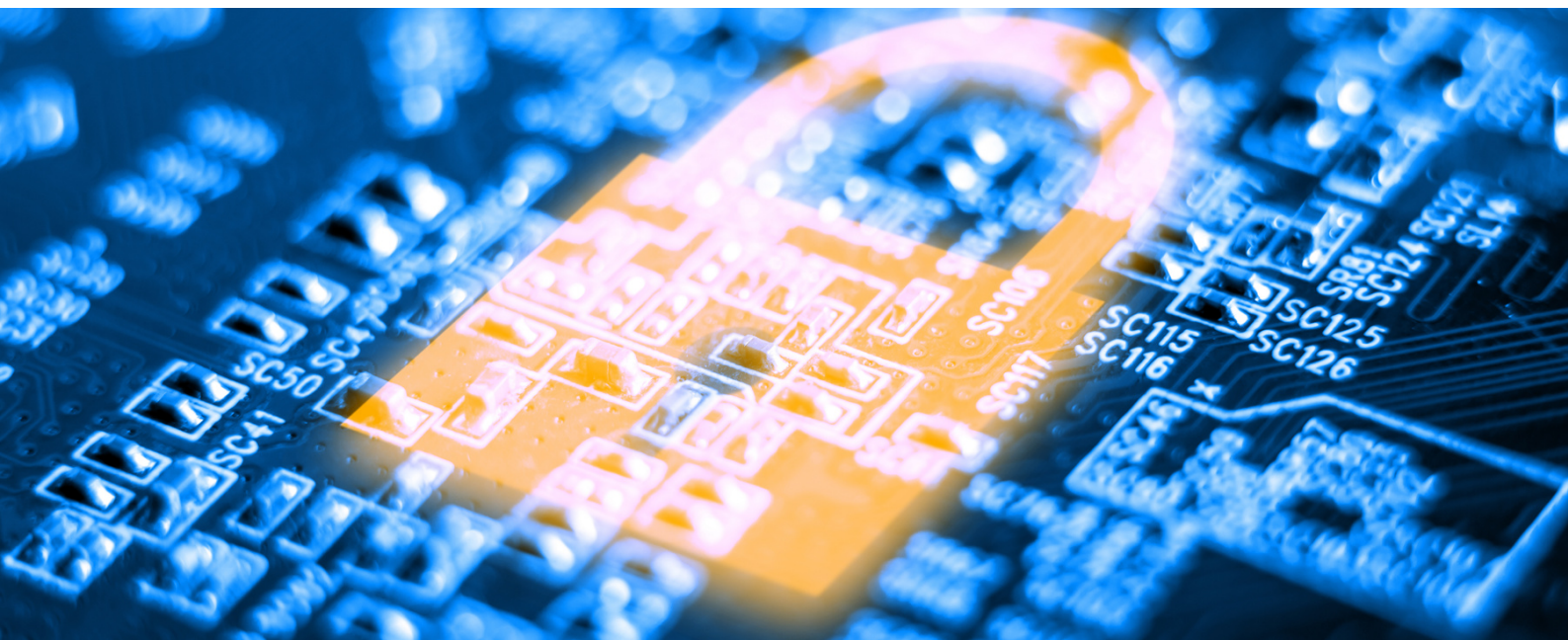
# Information security

- A physical smart card in the user's possession
- PKI - a digital certificate for strong identification
- Identification portal for unlocking a blocked card
- SSL-based encrypted communication
- Support of integrated process for issuing a card
- Using CRL to check revoked certificates
- Secure Contactless Identification
- Magnetic stripe encoded according to the required method by the organization
- Different permissions for different types of users in the system
- OTP authentication for unlock
- Sys Admin management capability for operating the tags and certificates
- Logs and alerts for enterprise information security systems

## Did you know?

*Comsign (Comda) is an **eIDAS QTSP** (Qualified Trust Service Provider).*

*QTSPs are regulated (Qualified) to provide trusted digital certificates under the electronic Identification and Signature (eIDAS) regulation.*





# Among our clients

We are happy to serve clients from a wide variety of industries and sectors in the market - government ministries, educational institutions and higher education, insurance and finance, energy, high-tech, communications, real estate, pharmaceuticals, aviation and tourism, security, services, vehicles, and more. A partial list of our customers:



For further details about our solutions, please contact us and we will gladly be at your service!

[sales@comda.co.il](mailto:sales@comda.co.il)