



PKI - Public-key infrastructure

Take Control – Become Your Own CA with ComSign's
CA As a Service (CAaaS)



Comda – Leading in strong authentication solutions and digital signing



Issue digital certificates for employees access to organizational systems and e-signing or for network components management.

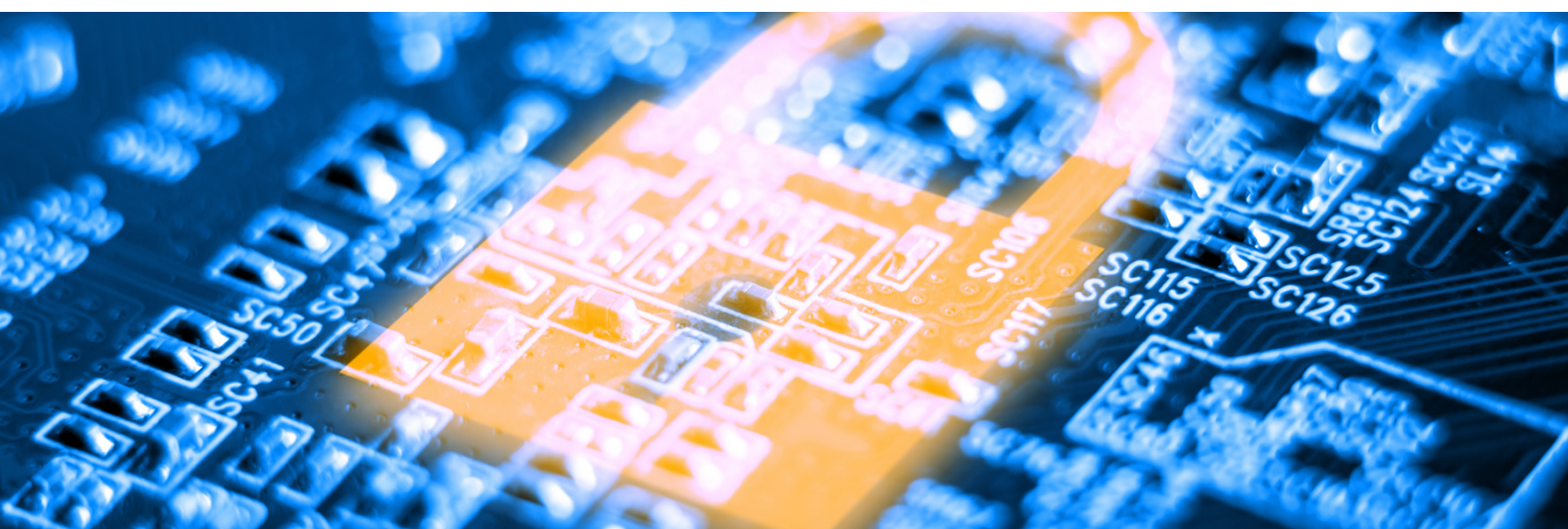
Issue, store, distribute and revoke digital certificates on smart cards, USB tokens and HSMs (Hardware Security Module)

Comsign CAaaS (CA As a Service) is a CA establishment turnkey solution. It will design, install, deploy, configure and train your employees to operate your own CA. Comsign's CAaaS is a full PKI infrastructure solution based on cryptographic hardware (HSM).

Comsign's PKI infrastructure is composed of a Root CA that signs the intermediate CA's (SUBCA) that in turn signs the end certificate for the required users or network components.

The Root and intermediate CA's certificates are generated through a secured HSM component (Common Criteria EAL4 or FIPS 140-2 Level 3) that generates and saves the CA keys, while the operational CA's (registration authority) certificates are issued through a Microsoft based CA system.

PKI technology is based on encryption with asymmetric keys: a public key distributed publicly and a private key that is kept secret. The encryption is performed in the cryptographic hardware using the private key, while the decryption is done using the public key.



As a company that has specialized for over 20 years in approved digital signature solutions for organizations, we know all the technological innovations that will provide you with the high level of information security that you are looking for. The company's reputation has led us to work with the world's leading manufacturers and suppliers in the fields of cryptography and information security, and above all the customer and the unique needs of the organization are before our eyes.

The benefits of choosing Comsign's PKI:

- An encrypted and secure system using the HSM of the world's leading manufacturers.
- Independent management and issuance of digital certificates with connection to the enterprise AD.
- Interface with additional Comsign solutions and advanced modules
- Issuance of certified signatures through Comsign.
- Full Comsign warranty on all components.
- Service and support from the sales stage through installation to maintenance and troubleshooting.



Did you know?

*Comsign (Comda) is an **eIDAS QTSP** (Qualified Trust Service Provider).*

QTSPs are regulated (Qualified) to provide trusted digital certificates under the electronic Identification and Signature (eIDAS) regulation.



Enterprise PKI can be used for other purposes (communication equipment management such as computers, FW, SWITCH, etc.). Comsign experts will be happy to be at your service and tailor a PKI solution to all your organization's needs.



Among our clients

We are happy to serve clients from a wide variety of industries and sectors in the market - government ministries, educational institutions and higher education, insurance and finance, energy, high-tech, communications, real estate, pharmaceuticals, aviation and tourism, security, services, vehicles, and more. A partial list of our customers:

The logo for RAFAEL, featuring the word "RAFAEL" in blue capital letters followed by a blue circular icon containing a stylized white arrow pointing right.The logo for NETAFIM, featuring a blue water drop icon to the left of the word "NETAFIM" in blue capital letters.The logo for IAI, featuring a blue circular icon with a white globe and a blue lightning bolt above it, followed by the letters "IAI" in blue.The logo for WIX, featuring a yellow smiley face icon to the left of the word "WIX" in black capital letters with ".com" in smaller text below it.The logo for fiverr, featuring the word "fiverr" in white lowercase letters on a green rectangular background.The logo for ESS, featuring a blue circular icon with a white checkmark and the letters "ESS" in white.The logo for CYBERARK, featuring a blue 3D cube icon above the word "CYBERARK" in blue capital letters.The logo for ZIM, featuring five blue stars above the word "ZIM" in blue capital letters.The logo for BRINKS, featuring a blue shield icon with a white "B" above the word "BRINKS" in blue capital letters.The logo for TATA, featuring a blue circular icon with a white stylized "T" above the word "TATA" in blue capital letters.The logo for CROWNE PLAZA, featuring a red circular icon with a white stylized "C" above the words "CROWNE PLAZA" in red capital letters and "HOTELS & RESORTS" in smaller red capital letters below it.The logo for Pfizer, featuring the word "Pfizer" in white lowercase letters inside a blue oval.The logo for ELVAL, featuring the word "ELVAL" in blue and gold capital letters with a gold star to the right.The logo for DIPLOMAT, featuring the word "DIPLOMAT" in blue capital letters with a white diagonal line through it.The logo for TOYOTA, featuring a silver Toyota emblem above the word "TOYOTA" in red capital letters.The logo for Hertz, featuring the word "Hertz" in black lowercase letters on a yellow rectangular background.The logo for Coca-Cola, featuring the word "Coca-Cola" in its signature red script font.The logo for Elbit Systems, featuring the word "Elbit Systems" in blue capital letters on a yellow and blue background.

Want to manage your company's Digital Identity?
Become your own CA. Contact us and start taking control

sales@comsign.co.il